



Removable feed for easy transportation

Application:

- Band 4 frequency, 4.4 –5.0 GHz
- Designed for line-of-sight (LOS) and high capacity line-of-sight (HCLOS) radio relay communications.
- High gain
- Rotating feed to set vertical or horizontal polarisation
- Rugged high quality antenna with a durable construction
- Suitable for harsh environments.
- Standard mast mounting interface
- Removable feed for protection and easy transportation

Electrical specifications:

Frequency range	4.4-5.0 GHz
VSWR	≤ 1.5
Connector	N - female 50Ω or customer specified
Power rating	20 W
Gain	> 27dBi
Beam width	5° @ ± 3dB
Polarisation	Vertical or Horizontal
Front to back ratio	> 30dB
Cross Pol. rejection	> 20dB

Mechanical specifications:

Design	Primary feed parabolic dish antenna. Dish and fixing made in aluminium and feed in fibreglass laminate.
Diameter	Ø 0.77m
Weight	5.2kg
Wind load	1000N @ 45m/s
Finish	Polyurethane lacquer
Temperature range	-55 °C, +71°C; -67 °F, +160 °F
Mast interface	Mast with Ø 39.5mm male spigot

Radiation pattern

Date: 19-Aug-09

Time: 12:30

Operator: PE

Ser. no.:

Channel: Test

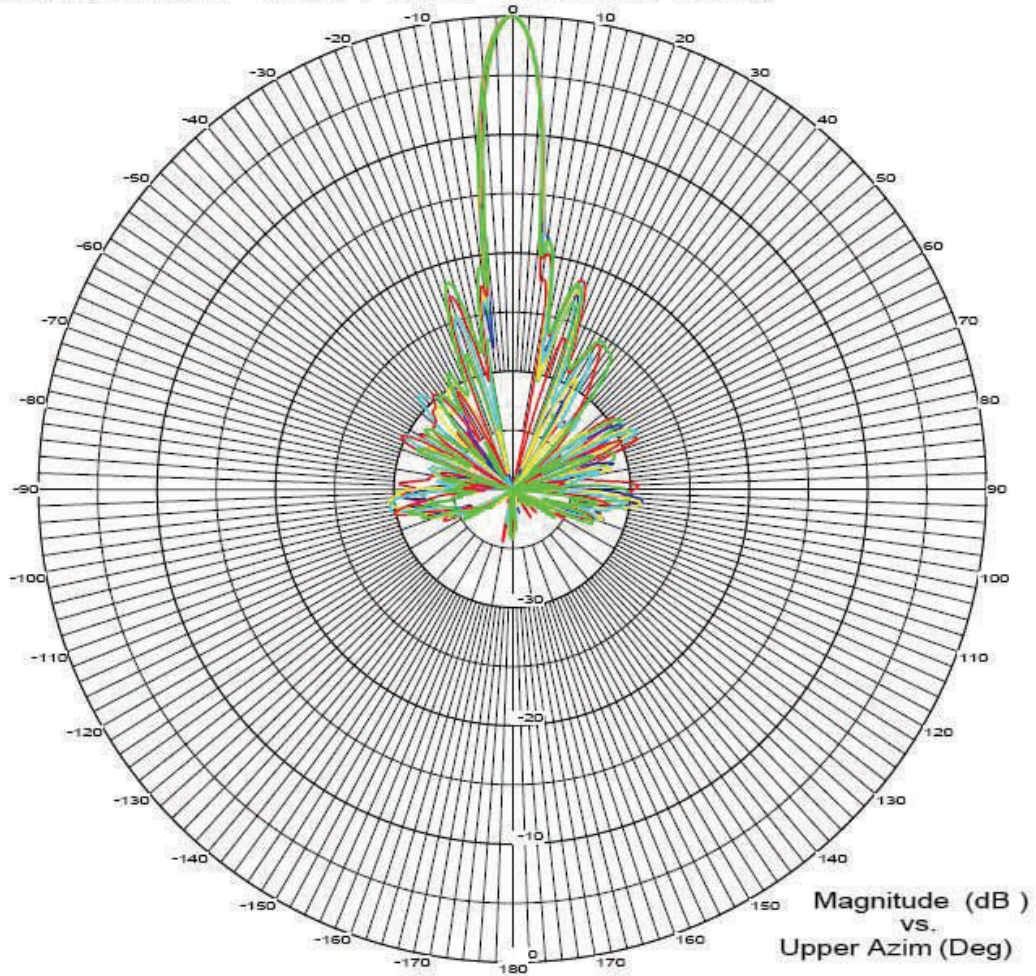
Frequency: See Legend

Tx pol: Horiz.

Rx pol: None

Elevation : 0.00 Deg

Lower Azimut: -45.01 Deg



Overlays

Frequency	4.400 GHz	—
Frequency	4.500 GHz	—
Frequency	4.600 GHz	—
Frequency	4.700 GHz	—
Frequency	4.800 GHz	—
Frequency	4.900 GHz	—
Frequency	5.000 GHz	—

FR959 Plus

Gain Curve

