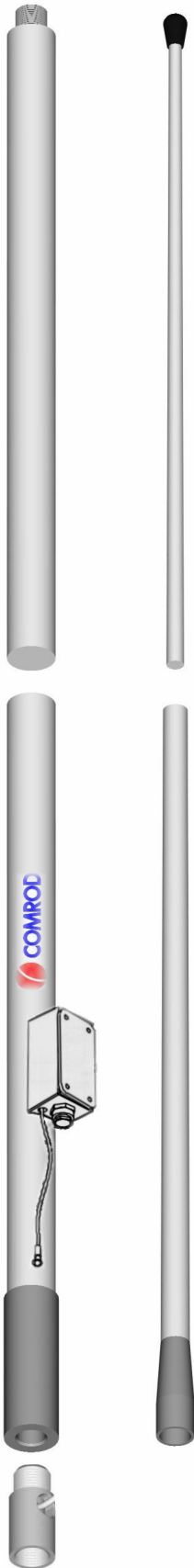


COMROD AT73 Antenna series

23' Marine HF Antenna



See page 2
For different Versions.

Application:

AT73TS23-2 is a high quality fiberglass HF antenna for marine coastal and SSB telephony bands. It is a high quality antenna with a durable construction and a beautiful finish for installation on all kinds of vessels.

The antenna is side feed, and the bottom bracket does not need to be insulated.

Electrical specifications:

| | |
|--------------------|---------------------|
| Frequency range | 1.6-30 MHz |
| Power rating | 1 kW PEP |
| Static capacitance | 70 pF @ 2MHz |
| Polarization | Vertical |
| Pattern | Omnidirectional |
| Electrical length | 6.8 m (23 ft) |
| Feed system | Open wire, side fed |

Mechanical specifications:

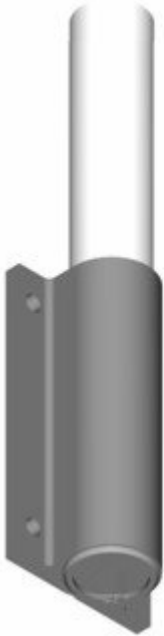
| | |
|-----------------------------|---|
| Design | Fiberglass whip in two sections. Stainless steel . |
| Height | 24' (7,30 m.) |
| Weight | 5.1 kg |
| Sections | Base: 11,5 ft (3.5m) Top: 11,5 ft (3.5m) |
| Wind rating | 55 m/s = 125 mph |
| Moment of flexure | 85 kpm at 55 m/s |
| Deflection due to wind load | 4.2 m (10 ft) at tip ball with 55 m/s wind load |
| Finish | Polyurethane lacquer, white Chrome plated fittings |
| Temperature range | -55 °C, +71 °C, -67 °F, +160 °F |
| Ice build-up | Not affected |

Mounting:

The antenna is mounted at the superstructure with a UNS1"x14 base, and a 1½" support at least 0.5m above the base. Support and base not included.

If the AT73TS23-2 HF antenna has to be mounted symmetrical with AV100BI23-2 VHF antenna, an AV-C adapter is required between the base section and the bottom bracket on AT73TS23-2 as on AV100BI23-2.

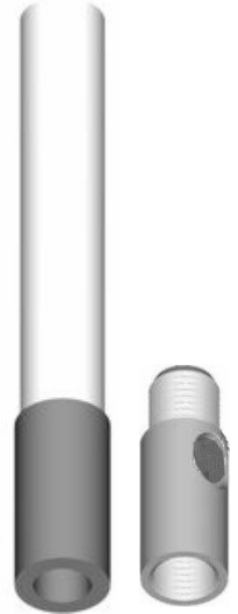
Different versions:



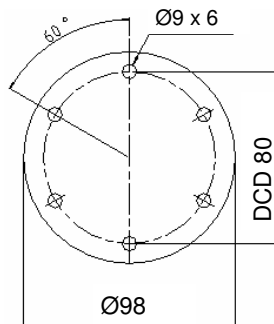
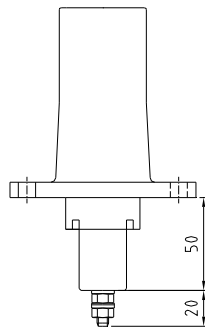
AT73M23-2
Mast mount,
self supporting.
Side fed.



AT73D23-2
Deckmount,
selfsupporting.
End fed.



AT73TS23-2
Standoff mount.
Side fed.



Mounting:

AT73M16-2 is easily mounted to the bulkhead by means of 4 holes in the aluminum bracket, or to a mast or tube with U-bolts. The U-bolts in stainless steel, are included.

Mounting:

To be mounted at superstructure with UNS 1"x14 base and support approx. 1.5' up. Stand off support and base are not included.
To be able to have cable feed at the bottom of the antenna above mounting bracket, an AV-C adapter (included) can be used.