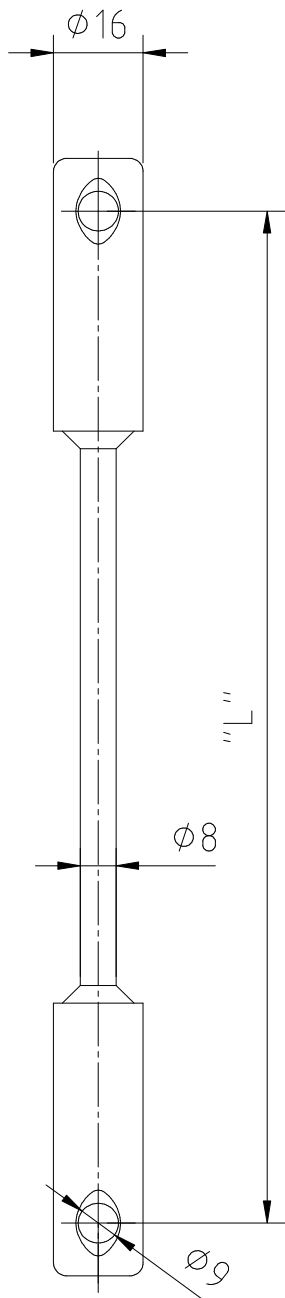


COMROD IS-8

Strain Insulator



Application:

The IS-8 is primarily designed as a long wire aerial insulator. It has also successfully been used in the electric utility industry as a switch wire insulator.

Electrical specifications:

Test voltage	Tested for 25 kV in wet condition
Tracking	The fibreglass rod is coated with polyurethane lacquer especially tested for tracking and ageing.

Mechanical specifications:

Design	Fiberglass rod with stainless steel armatures. The fiberglass rod is completely sealed inside the armatures. The rod is coated with polyurethane lacquer.
Length	IS8-230: L=230 mm IS8-430: L=430 mm IS8-830: L=830 mm
Weight	IS8-430: 0.3 kg
Max. Load	600kp

Special versions with other lengths are available on request.