

Application:

The AC16 is a series of high quality antennas designed for the 800 and 1900 cellular service. It is a high quality antenna with a durable construction and a beautiful finish for installation on all kinds of vessels. The antenna is available with three mounting options and in two heights.

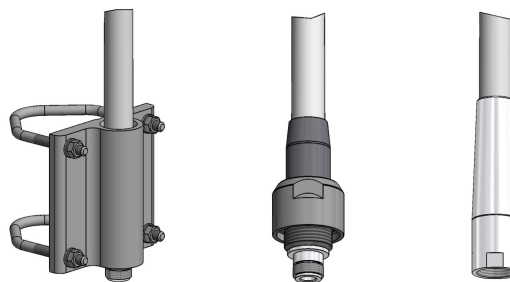
Electrical specifications:

Frequency range	824-894 MHz - VSWR 2.5:1 1850-1990 MHz - VSWR 2:1
Nominal impedance	50 ohm
Power rating	25 W
Gain	3 dBi
Pattern	Omnidirectional
Polarization	Vertical
Connector	N female

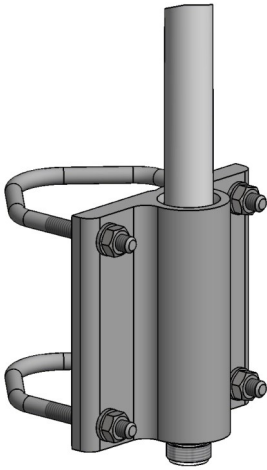
Mechanical specifications:

Design	Brass dipole elements. Radiating elements completely enclosed in polyurethane foam within a fiberglass tube.	
Height	2.4 m (8 ft)	1.2 m (4 ft)
Weight (approx)	1.1 kg (2.4 lbs)	0.7 kg (1.5 lbs)
Wind rating	55 m/s = 125 mph	
Finish	Polyurethane lacquer, white	
Temperature range	-55°C, +71°C / -67 °F, +160°F	

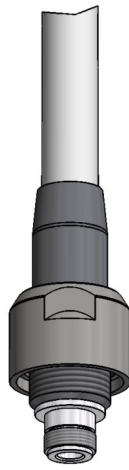
Mounting Options (see page 2)



Antenna Mounting Configurations



AC16M
 Ø30-60mm Pole Mount
 Bulkhead Mount



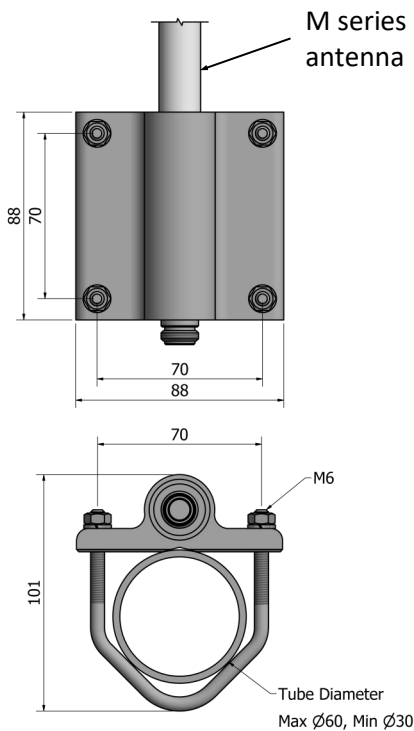
AC16P
 BSP 1" x 11 Female Nut
 UNS 1" x 14 Male Thread



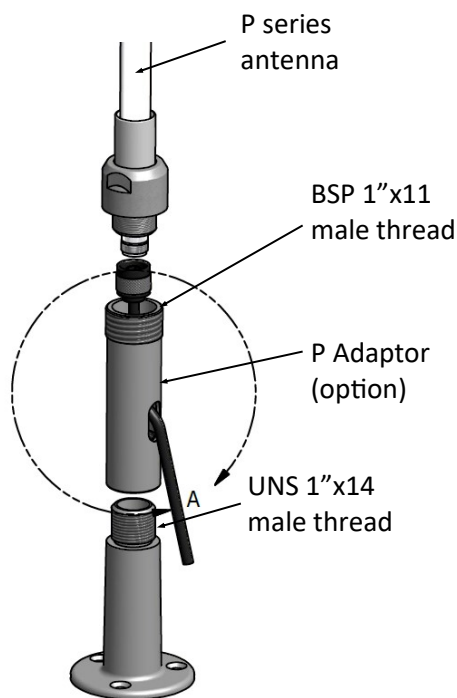
AC16BI
 UNS 1" x 14
 Female Thread

Mounting Accessories

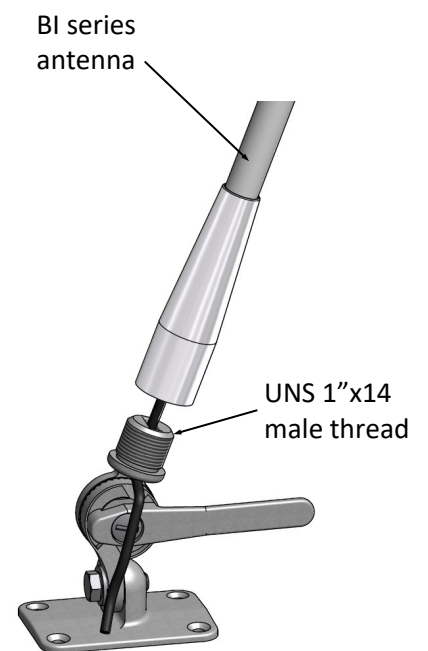
Comrod has a range of antenna mounting brackets and adaptors for P series and BI series antennas. Please visit Comrod website www.comrod.com for more details or email sales@comrod.com



Mast mount bracket
 (standard on AV55M)



Straight mount bracket
 (option)



4-Way Bracket
 (option)

Cellular communication systems covered by AC16 Series Antennas

Type	System		Frequency
Analog 800	FDMA	Hand: 824-849 MHz Base: 869-894 MHz	824-894 MHz
Digital 800	TDMA, hybrid TDMA/FDMA, CDMA	Hand: 824-849 MHz Base: 869-894 MHz	824-894 MHz
PCS 1900 (digital)	TDMA, CDMA or GSM	Hand: 1850-1910 MHz Base: 1930-1990 MHz	1850-1990 MHz