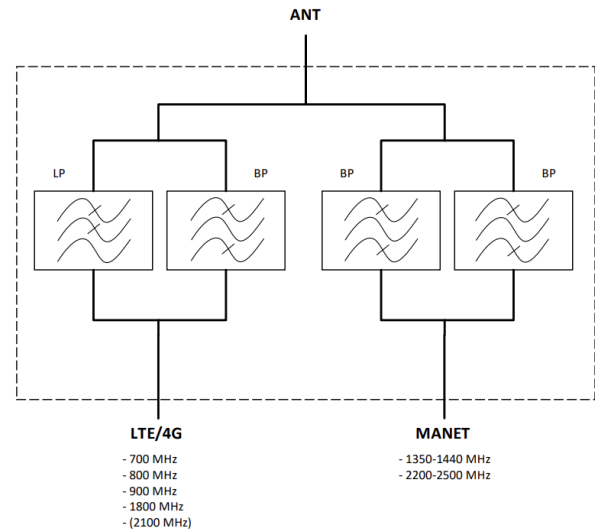




## Features

- Passive Combiner / Splitter for combining two radios into a single antenna
- COMMON 700-2500 MHz  
LTE/4G 700-960 & 1710-1880 MHz  
MANET 1350-1440 & 2200-2500 MHz
- Low loss
- Good isolation between bands

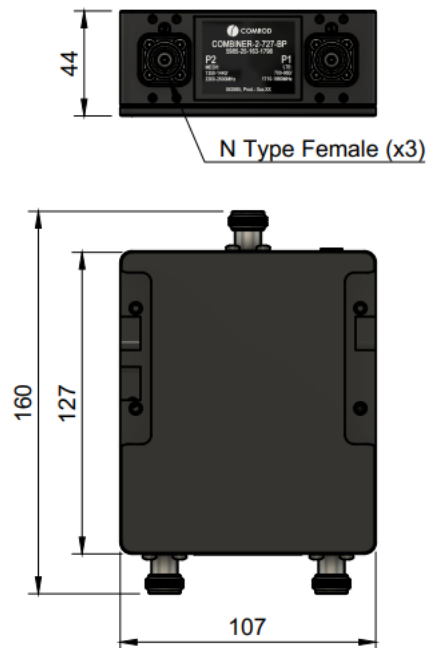


## Electrical specification

	COMMON	LTE/4G		MANET	
Frequency range	700-2500 MHz	700-960 MHz	1710-1880 MHz	1350-1440 MHz	2200-2500 MHz
VSWR	1.7 typical (max 2.5)	1.3 typical (max 2)	1.7 typical (max 2)	1.6 typical (max 2.5)	1.7 typical (max 2.5)
Loss		-0.7 dB typical (max -1.2 dB)	-0.8 dB typical (max -1.2 dB)	-1.1 dB typical (max -1.6 dB)	-1.4 dB typical (max -2 dB)
Isolation		LTE-MANET < 20 dB (LTE band dependent)		MANET-LTE < 20 dB (frequency band dependent)	
Power rating		20 W PEP		20 W PEP	
Nominal Impedance	50 Ohm				
Connectors	3 x N Type female				

## Mechanical specification

Design	Aluminum housing
Dimensions housing	127 x 107 x 44 mm 4.75 x 4.2 x 1.7 in
Dimension overall	160 x 107 x 44 mm 6.3 x 4.2 x 1.7 in
Weight	0.75 kg (1.65 lbs)
Temperature range	-55°C to +71°C, -67°F to +160°F

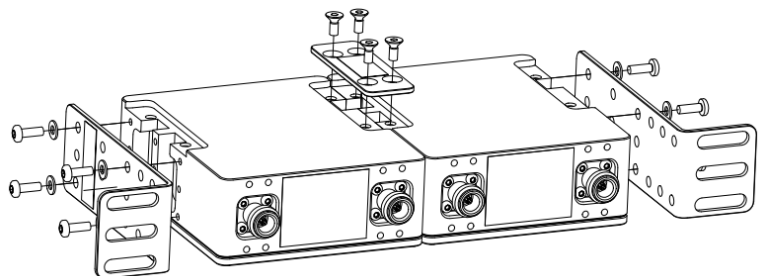


## Mounting Accessories

Comrod has a large range of mounting brackets for combiners, diplexers and triplexers. The standard enclosure is 1U tall x quarter 19" rack width (44mm tall x 107mm wide x 160mm deep). Units can be joined side-by-side to fit into a 19" rack as shown below. Extension brackets are available for mounting one, two, three or four units into a 19" rack.

### 19" Rack Mounting

2 x units with joining bracket and 19" rack mounting brackets for a 19/2 rack. Extension brackets can be supplied to fit a full 19" rack.



### Bulkhead Mounting

Combiner, diplexer or triplexer with bulkhead mounting brackets. Multiple units can be joined using the joining brackets and share the same bulkhead mounting brackets.

