

Spring Base (non GPS) shown
See page 2 for base options

Features:

- Broadband dipole antenna
- Frequency 100 - 512 MHz
- Standard NATO pattern base options.
- Designed for use on all modern in-service military platforms, including armoured or soft skin, metal chassis or composite, wheeled or tracked.
- No tuning required.
- Diplexer (2 connector) option for use with two transceivers
- High voltage protection option.
- L1 and L1/L2 GPS Options

Electrical specifications:

Frequency range	100-512MHz
VSWR	≤ 3.5
Nominal impedance	50 ohm
Power rating	50 W +0.8dB, 10 min
Gain	-5.. 1.5 dBi, see page 3
Radiation pattern	Azimuth: Omnidirectional
Polarisation	Vertical
Connector	BNC female, others on request

Mechanical specifications:

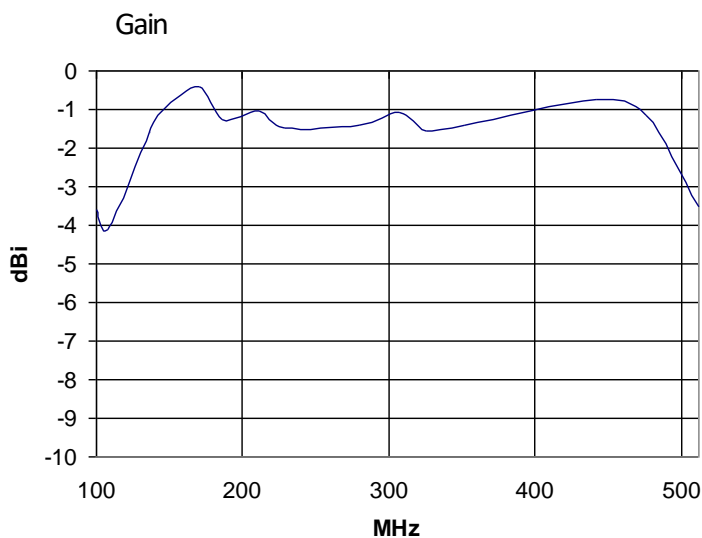
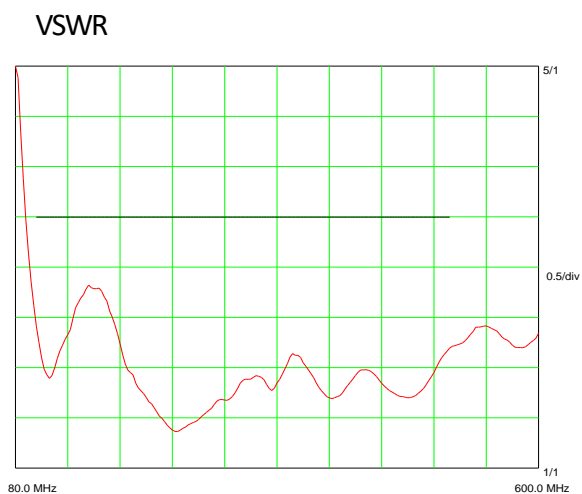
Design	Broad band centre fed dipole. Radiating element completely enclosed in epoxy/fibreglass laminate. Metal parts are brass and stainless steel.
Length *	Total: 1.25m Whip: 1.05m Base: 0.23m
Weight *	Total: 3.65kg Whip: 1.4kg Base: 2.25kg
Wind rating	55 m/s = 125 mph
Finish	Polyurethane lacquer, olive drab, other colours on request.
Temperature range	-55 °C, +71°C; -67 °F, +160 °F
Installation	Standard 4 hole NATO base with spring (see page 2/3 for base options)

* Standard 4-hole spring base type A

GPS Electrical Specification (option)

Configuration	L1 GPS	L1/L2 GPS
Frequency Band	1575.42 ± 10 MHz	L1 - 1575.42 ± 10 MHz L2 - 1227.60 ± 10 MHz
Supply Voltage	2.7-5.5V	2.7-5.5V
Pre-amplifier	26.5 dB @ 5V	26.5 dB @ 5V
Noise Figure	2.5dB	2.5dB
Supply Current	< 20mA	< 42mA
Polarisation	RHCP	RHCP
Connector	SMA female	SMA female

VSWR and Gain Curves



Antenna Base Options

Antenna bases are available for vehicle, shelter or mast installation. Bases can be configured with the following options:-

1. L1 GPS
2. L1/L2 GPS
3. High voltage protection is available for selected bases



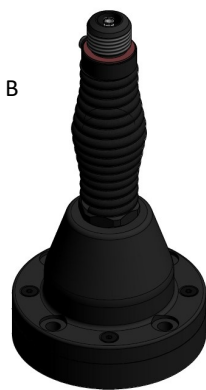
Standard CEF Connector
(connector between the whip and base)



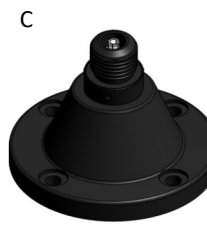
Optional VM Connector
(connector between the whip and base)



NATO 4-hole Spring
4 x M10 or 3/8" Bolts
on 114mm PCD
Base diameter 140mm (5.5in)
Base height 240mm (9.5in)



NATO 4-hole Spring GPS
4 x M10 or 3/8" Bolts
on 114mm PCD
Base diameter 140mm (5.5in)
Base height 280mm (11in)



NATO 4-hole Rigid
4 x M10 or 3/8" Bolts
on 114mm (4.5in) PCD
Base diameter 140mm (5.5in)
Base height 125mm (5in)



NATO
50mm Thread
Base diameter 95mm (3.74in)

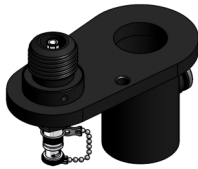
Antenna Base Options (continued)

E



General Purpose Bulkhead Adaptor
Mounting hole diameter 22mm

F



Mast Mount Brackets
40mm Socket
50mm Socket
Comrod AMX85 Mast
Customer Specified

G



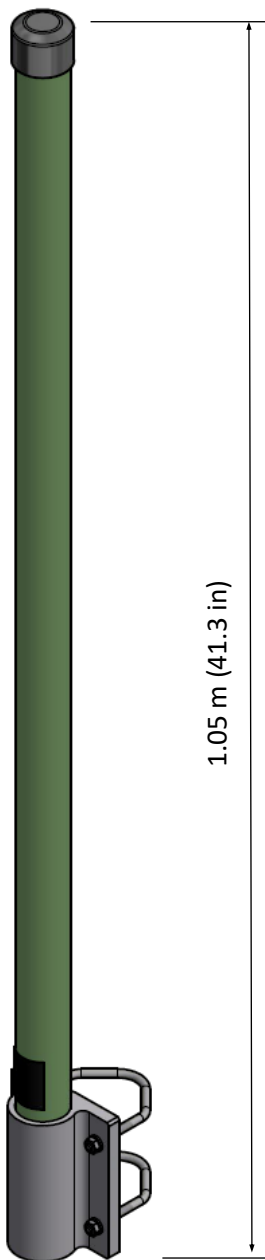
Mast Mount Brackets
24mm Spigot
40mm Spigot
50mm Spigot
Customer Specified

H



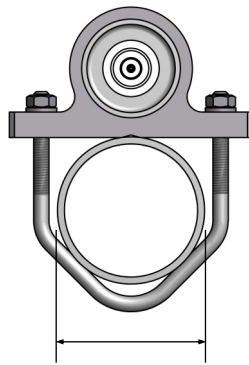
AMX85 Mast Mount Bracket
To fit Comrod AMX85 mast sections

Antenna Variants



VHF100512M

A permanent mast mount version is also available. Supplied with a fixed mounting plate and U-bolts. N type female or BNC female connector.



Mounting pole diameter
33-60 mm (1.3-2.4 in)