

VHF108200VM
(Base type A)

Features:

- 108-200 MHz
- Dipole design
- Designed for operation on all military & civilian platforms such as shelters, mounted on masts or on permanent installations
- Rugged high quality antenna with a durable construction
- NATO flange base options available including vehicle/shelter, mast mount and GPS
- Permanent mast mount bracket option

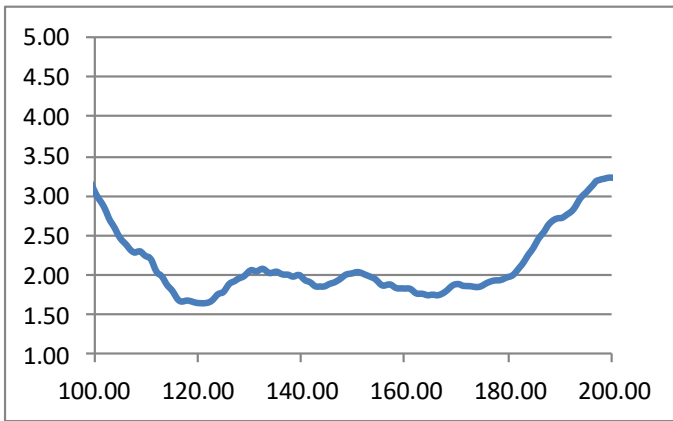
Electrical specifications:

Frequency range	108-200 MHz
VSWR	< 2.5:1 136-174 MHz < 3:1 108-185 MHz < 3.5:1 185-200 MHz (see diagram)
Impedance	50 ohm
Power rating	50 W continuous for 15 minutes
Gain	See curve
Radiation pattern	Azimuth: Omnidirectional
Polarisation	Vertical
Connector	N female (others on request)

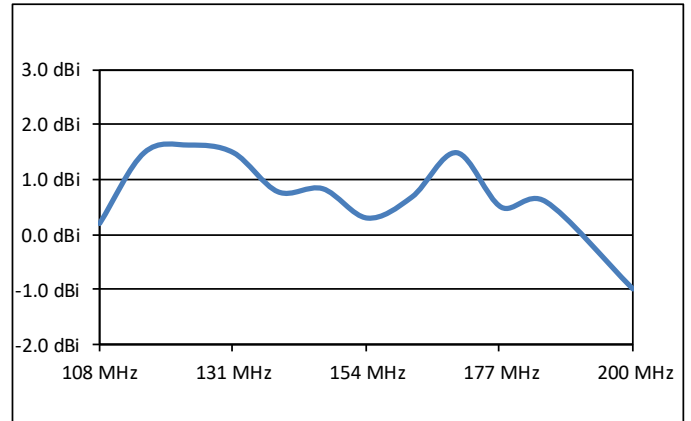
Mechanical specifications:

Design	Centre fed dipole. Radiating element completely enclosed in epoxy/fibreglass laminate. Metal parts are brass and stainless steel.
Length	1.65 m (base type A)
Weight	4.15 kg (base type A)
Wind rating	55 m/s = 125 mph
Finish	Polyurethane lacquer, colour on request.
Temperature range	-55 °C, +71°C; -67 °F, +160 °F
Installation	See over page

VSWR (typical)



Gain (typical)

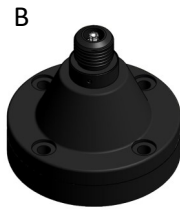


Base Options

Bases are available to suite most mounting configurations. L1 and L1/L2 GPS and high voltage protection is also available on many bases. Below is a small selection, please view datasheet *Dipole-Antenna-Mounts.pdf* for a more detailed selection or contact Comrod to discuss your requirement.



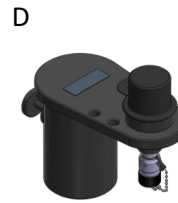
A
NATO 4-hole Spring
GPS Option
4 x M10 or 3/8" Bolts
on 114mm (4.5in) PCD
Base Dia. 140mm (5.5in)



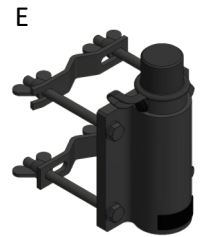
B
NATO 4-hole Rigid
GPS Option
4 x M10 or 3/8" Bolts
on 114mm (4.5in) PCD
Base Dia. 140mm (5.5in)



C
NATO 50mm Thread
GPS Option
Base Dia. 74mm (2.9in)
Base Dia. 95mm (3.74in) - GPS

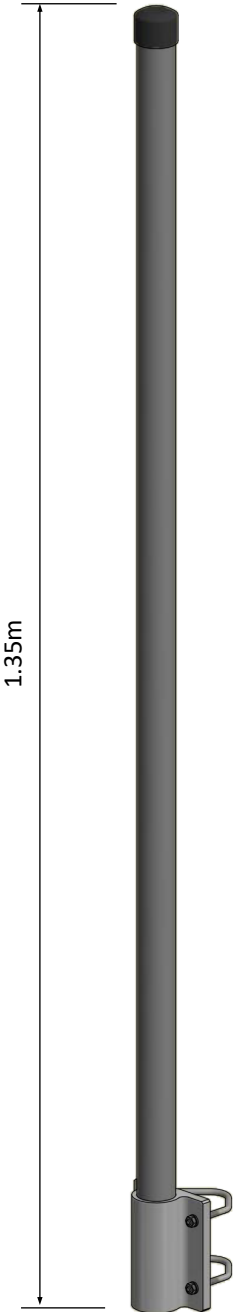


D
Mast Mount Bracket
Ø24mm (0.95in) Spigot
Ø40mm (1.57 in) Spigot
Ø50mm (1.97in) Spigot
Ø40mm (1.57in) Socket
Ø50mm (2in) Socket
Customer Specified



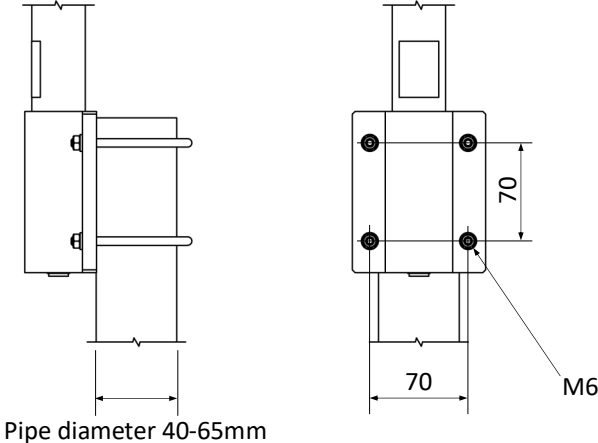
E
Pole/Rail Clamp Bracket
Pole diameters up to 65mm
0 or 90 degree mounting

Permanent Mount VHF108200M



VHF108200M
(Permanent Mount)

Pole Mounting



Bulkhead/Wall Mounting

