

Features

- VHF: 136-174 MHz
L1 GPS: 1575.42 ± 10 MHz
- Dipole design, no ground-plane required
- Passive L1 GPS element built into the whip
- Designed for operation on all tactical & civilian platforms
- Spring and rigid bases are available for vehicle, shelter, mast and pole mounting
- Available with Comrod VM or CEF type antenna to base connector
- Fixed pole or bulkhead mount variant

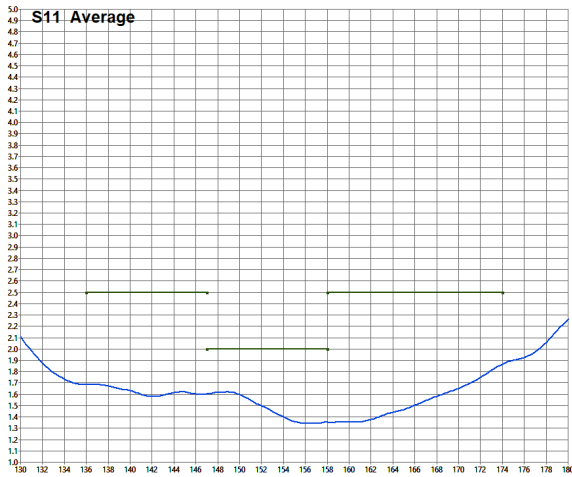
Electrical Specification

| | |
|-------------------|---|
| Frequency range | 136 - 174 MHz |
| VSWR | < 2:1 - 147-158 MHz < 2.5:1 - 136-174 MHz |
| Nominal impedance | 50 ohm |
| Power rating | 50 W CW |
| Gain | See diagram |
| Radiation pattern | Azimuth: Omnidirectional Elevation: See overleaf |
| Polarisation | Vertical |
| Connector | BNC Female, others on request |

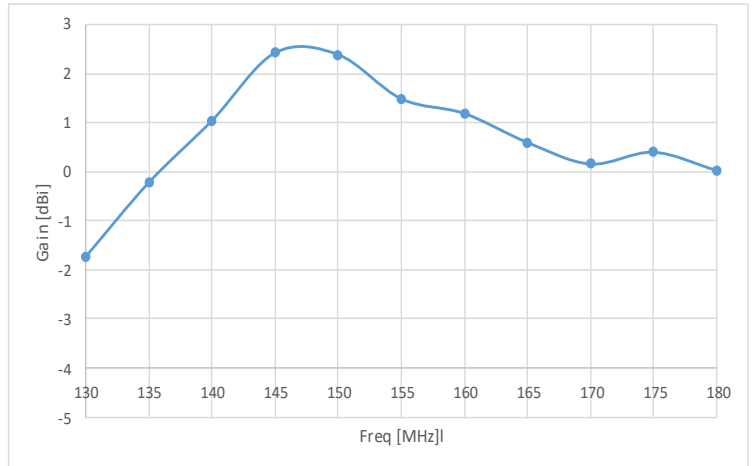
Mechanical specification

| | |
|----------------------|--|
| Design | Centre fed dipole with built-in L1 GPS. Radiating elements completely enclosed in epoxy/fibreglass laminate. Metal parts are plated brass and stainless steel. |
| Length (base type A) | Total: 1.34 m (53 in) Whip: 1.16 m (45.5 in) Base (option A): 0.22 m (9 in) |
| Weight (base type A) | Whip - 0.94 kg (2 lbs) Complete - 2.7 kg (6 lbs) |
| Wind rating | 55 m/s = 125 mph |
| Finish | Polyurethane lacquer. |
| Temperature range | -55 °C, +71 °C; -67 °F, +160 °F |

VSWR (typical)



Gain (typical)



Base Options

Below are a small selection of bases available for the VHF136174VM. Spring and rigid bases are available for vehicle, shelter, mast and pole mounting. Please contact Comrod at sales@comrod.com with your specific requirement.



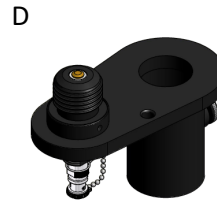
A
NATO 4-hole Spring
4 x M10 or 3/8" Bolts
on 114mm (4.5in) PCD
Base diameter 140mm (5.5in)
Base height 215mm (8.5in)



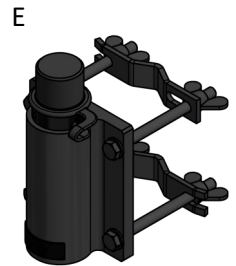
B
NATO 4-hole Rigid
4 x M10 or 3/8" Bolts
on 114mm PCD
Base diameter 140mm (5.5in)
Base height 100mm (4in)



C
NATO
50mm Thread
Base diameter 95mm (3.74in)



D
Mast Mount Bracket
24mm (0.94in) Spigot
40mm (1.57in) Spigot
50mm (1.97in) Spigot
40mm (1.57in) Socket
50mm (1.97in) Socket
Customer Specified



E
Mast Mount Bracket
Tube clamp to suit poles
up to Ø65mm

Antenna element to base connector

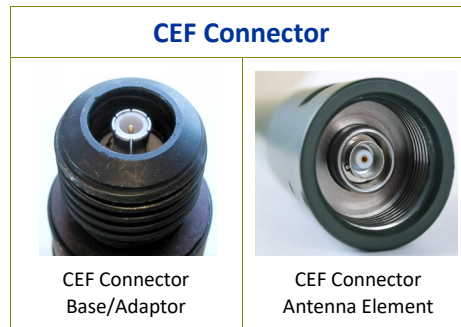
The VHF136174VM can be supplied with either a Comrod VM or CEF type connection between the antenna element and base/mounting. The connection shares the same size mounting thread but has a different internal RF contact. Both of these connectors are proprietary to Comrod.



VM Connector
Base/Adaptor



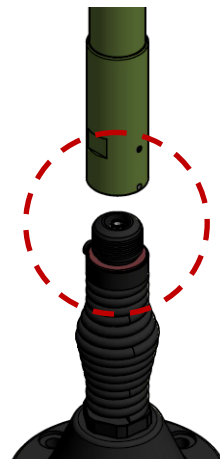
VM Connector
Antenna Element



CEF Connector
Base/Adaptor



CEF Connector
Antenna Element



Antenna to base
connection

VHF136174M

For permanent pole or bulkhead mounting. Supplied with N type female connector. Supplied with M6 U-Bolts.

