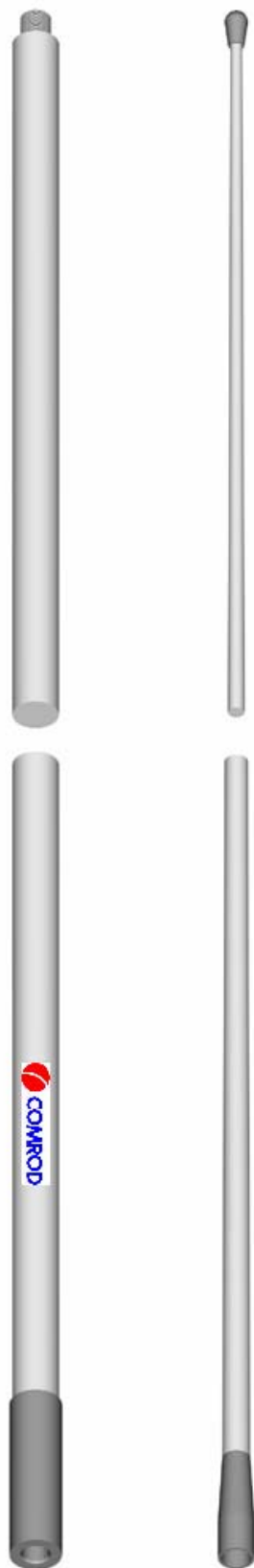


# COMROD AV100 Section Antenna Series

## 23' Marine VHF Antenna



### Application:

The AV100BI23-2 antenna is a high gain antenna designed for the maritime VHF radio telephone service. It is a high quality antenna with a durable construction and a beautiful finish for installation on all kinds of vessels.

It consists of a base (AV100/2-B) and a top (AV100/2-T) section.

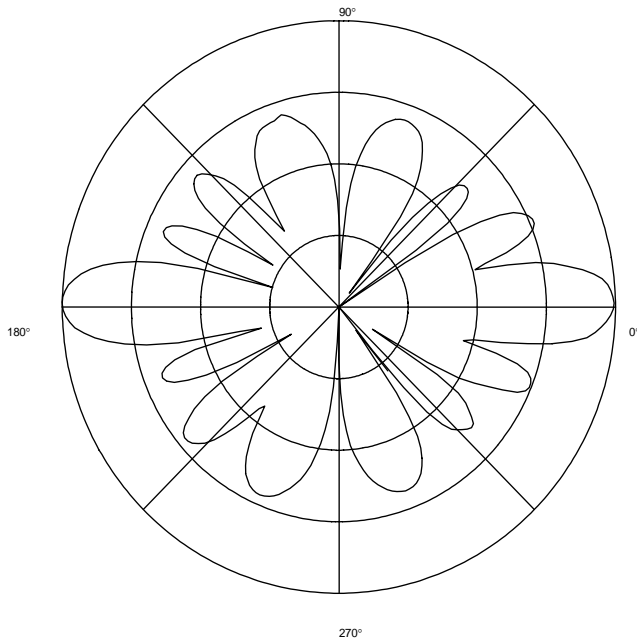
### Electrical specifications:

Type	AV100BI23-2	AV100D23-2	AV100M23-2
Frequency range	156 – 162 MHz VSWR<1.5 @ 158.6MHz		
Nominal impedance	50 ohm		
Power rating	100 W		
Gain	10 dB		
Pattern	Horizontal plane:	Omnidirectional	
	Vertical plane:	See reverse side	
Polarization	Vertical		
Connector	BI female.	UHF female.	UHFfemale.
DC-grounded	Yes		

### Mechanical specifications:

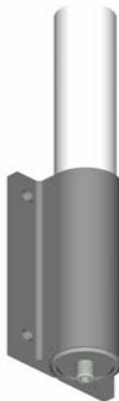
Design	Phased 1/2λ elements in a collinear array with a coaxial choking sleeve to suppress cable radiation. Radiating elements completely enclosed in polyurethane foam within a fibreglass tube.
Height	23' (7 m.)
Weight	3.8 + 1.2 = 5 kg
Wind rating	55 m/s = 125 mph
Sections	Base: 11,5 ft. (3,5 m.) Top: 11,5 ft. (3,5 m.)
Finish	Polyurethane lacquer, white
Temperature range	-55 °C, +71 °C; -67 °F, +160°F

Suitable cable: RG58, RG213 or similar.



Vertical radiation diagram  
f= 156.8MHz

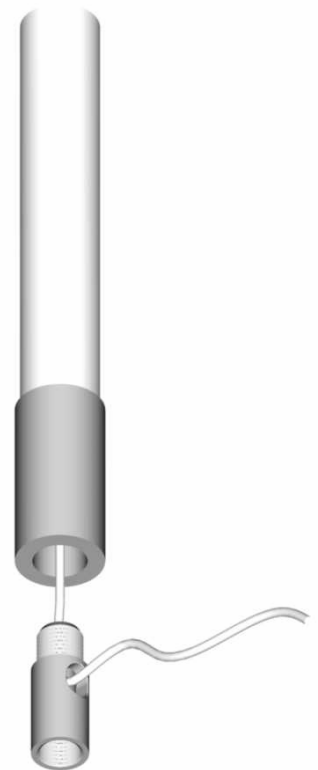
Different versions:



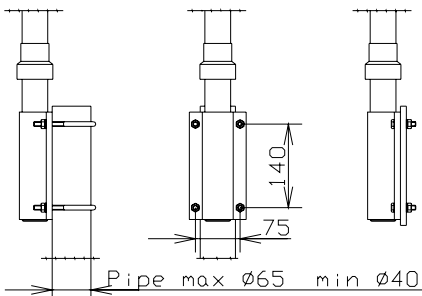
AV100M23-2  
(UHF-Connector)



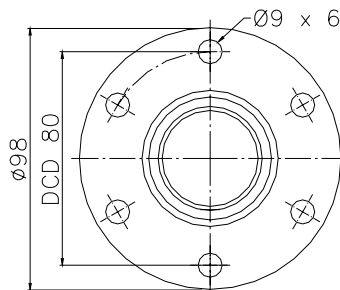
AV100D23-2  
UHF-Connector



AV100BI23-2  
Integrated BNC-  
Connector



The U-bolts in stainless steel, are included. Use bolts and nuts M10.



Deck mount

**Mounting:**

To be mounted at superstructure with UNS 1x14 base and support approx. 1.5' up. Stand off support and base are not included.

To be able to have cable feed at the bottom of the antenna above mounting bracket, an AV-C adapter (included) can be used.